

# Hur går det för våtmarksfåglarna hos oss?



# Ronnie Lindqvist

**-fågelskådare sen 60 år  
tillbaka**

**-inventerare**

**-aktiv i NOF**

**-pensionär**

**-ornitolog??**



# Vi i NOF har gjort en Atlasinventering!

- Besökt alla naturtyper (biotoper) i hela Närke
- Utfördes detta under 10 år, 2005 – 2015
- Noterade alla häckningsindicier området
- Resultatet jämfördes med Atlasinventeringen 1974 - 1984

# Närke

201 rutor 5x5 km

Barrskog

Stora sjöar

Lövskog

Slättsjöar

Blandskog

Skogssjöar

Åkermark

Åar

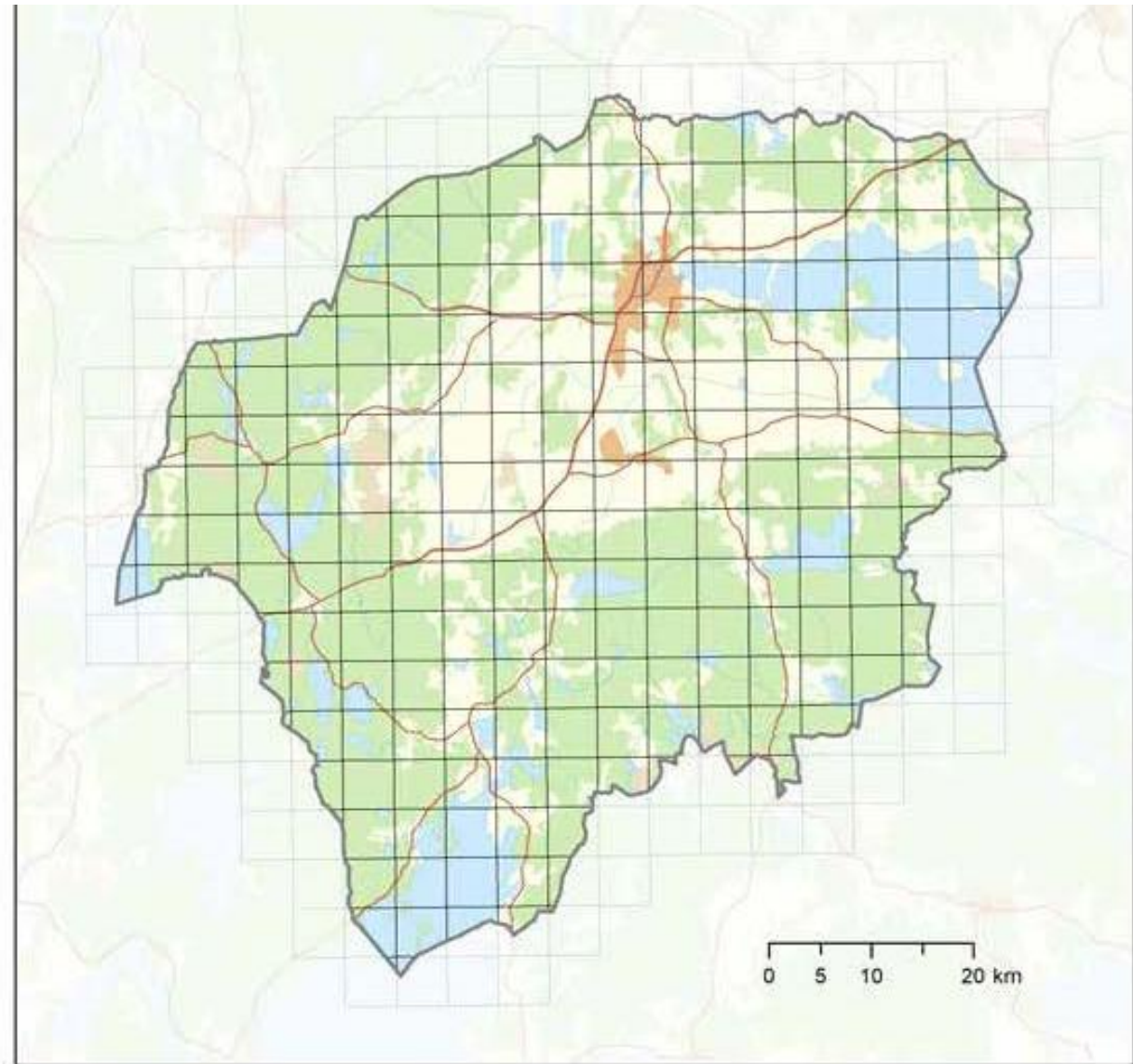
Ängsmark

Myrmark

Obrukad  
mark

Stadsmiljöer

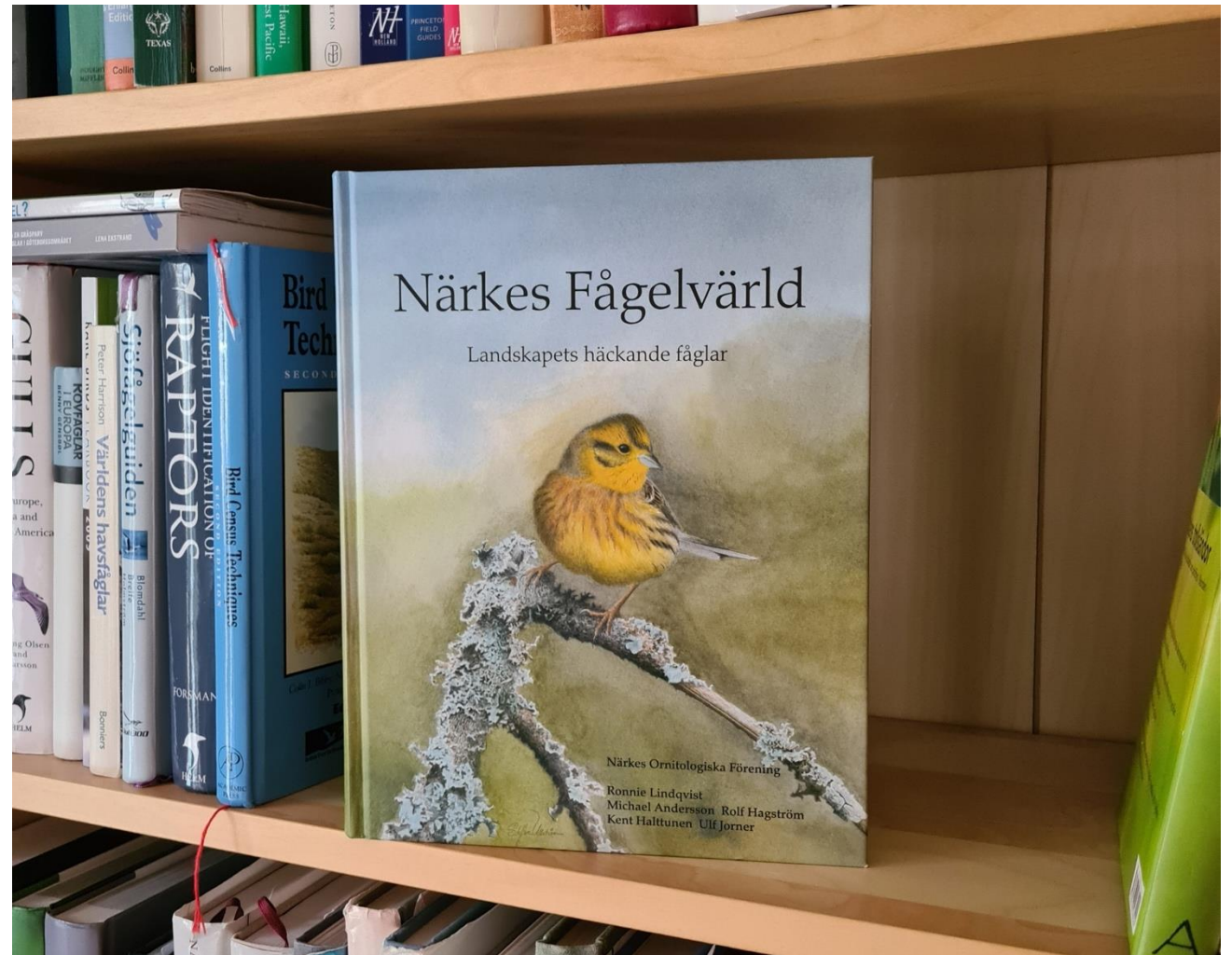
Förkastnings-  
branter



# Närkes Fågelvärld

Alla Närkes  
häckande  
fågelarter

Trender och  
förändringar från  
1974 till 2015



# Vad kom vi fram till?

Atlasinventeringen mäter  
förändringar i utbredningen

20% (37 arter) minskar

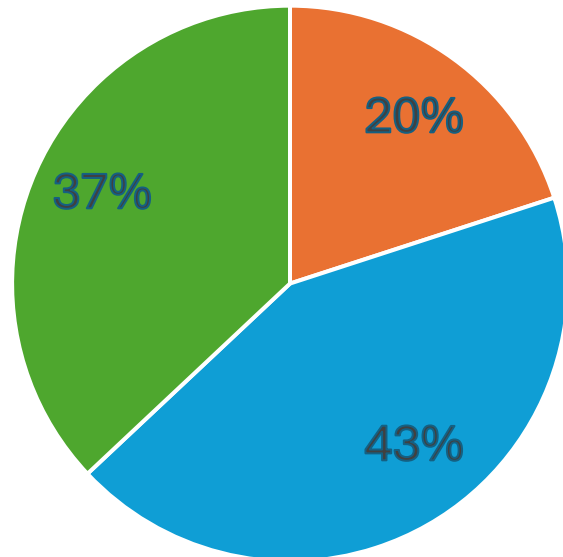
43% (76 arter) ökar

37% (65 arter) stabila



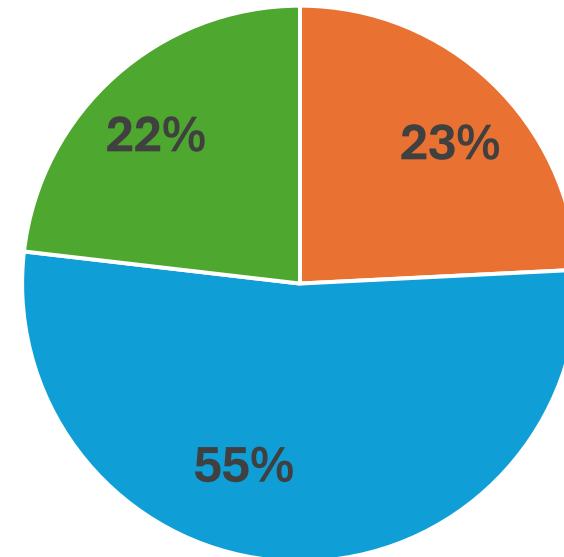
# Ökning, minskning, stabilt

Samtliga arter enligt Atlas 2



■ Minskar ■ Ökar ■ Stabila

Våtmarksarter enligt Atlas 2



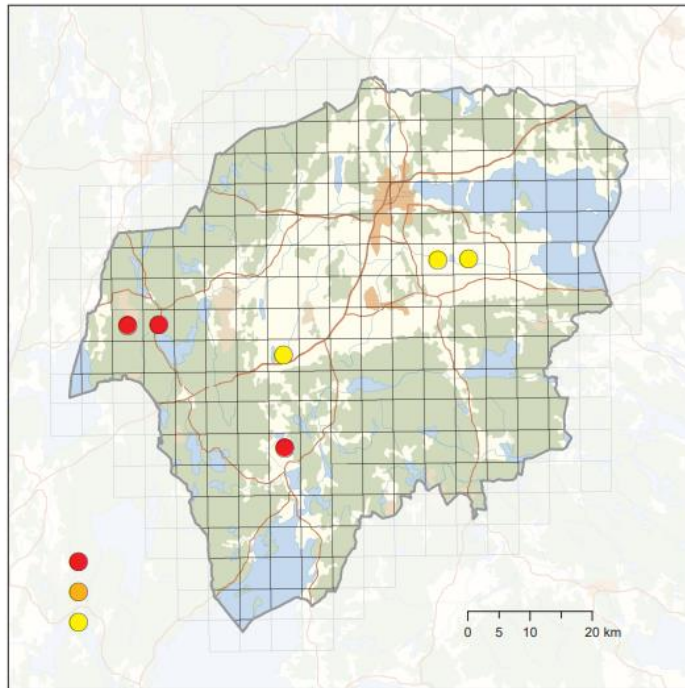
■ Minskar ■ Ökar ■ Stabila



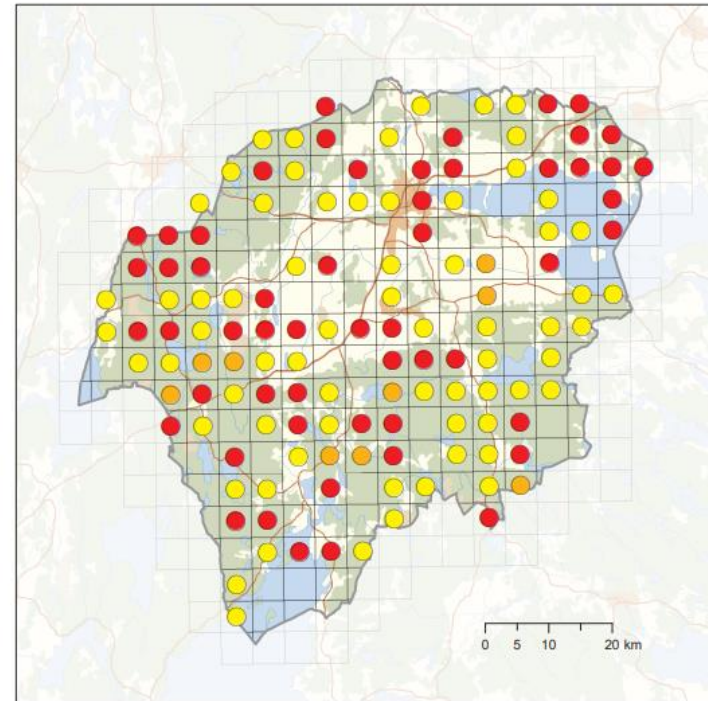


# Sångsvan

Atlas 1



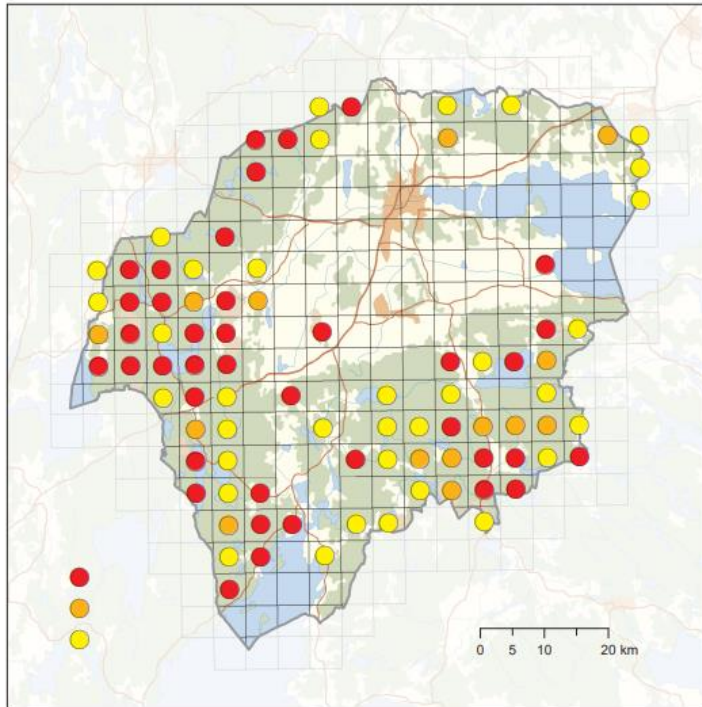
Atlas 2



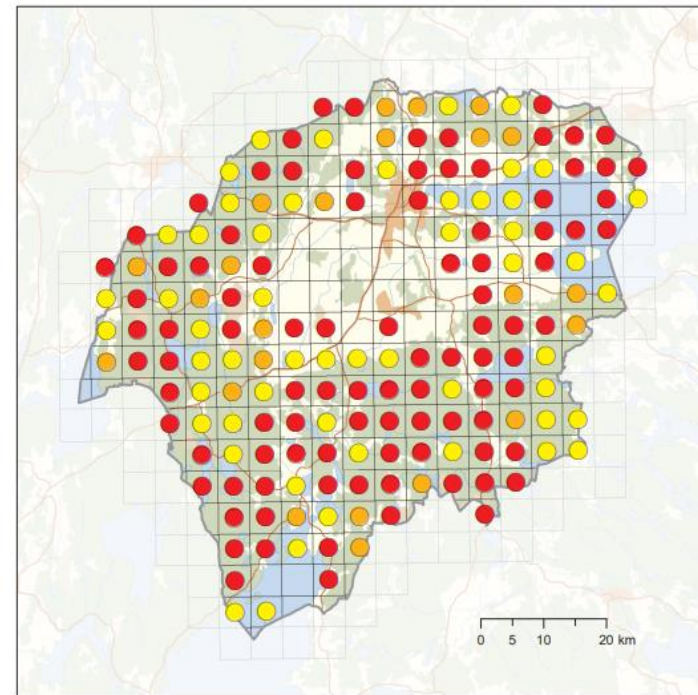


# Trana

Atlas 1



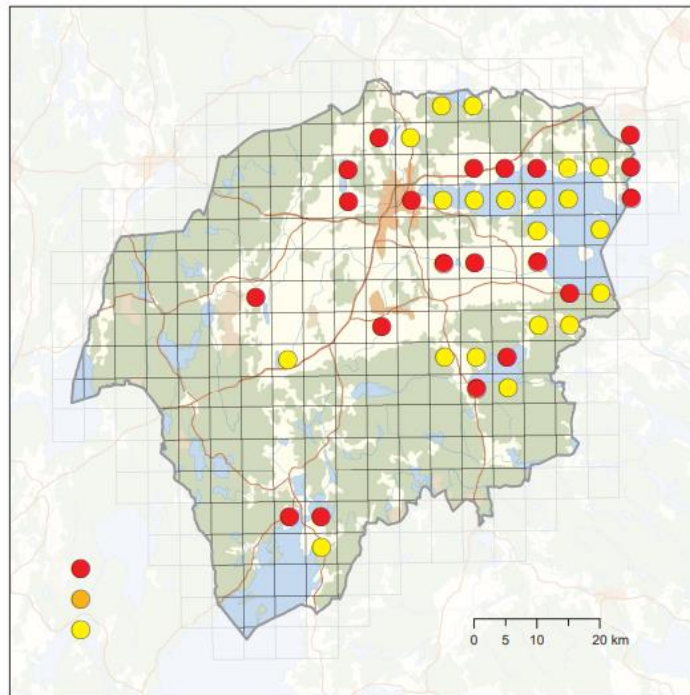
Atlas 2



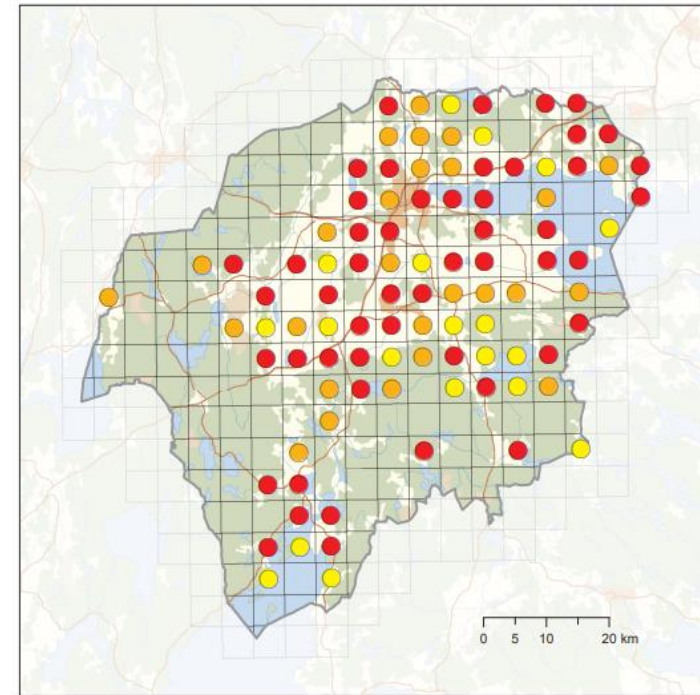


# Brun kärrhök

Atlas 1

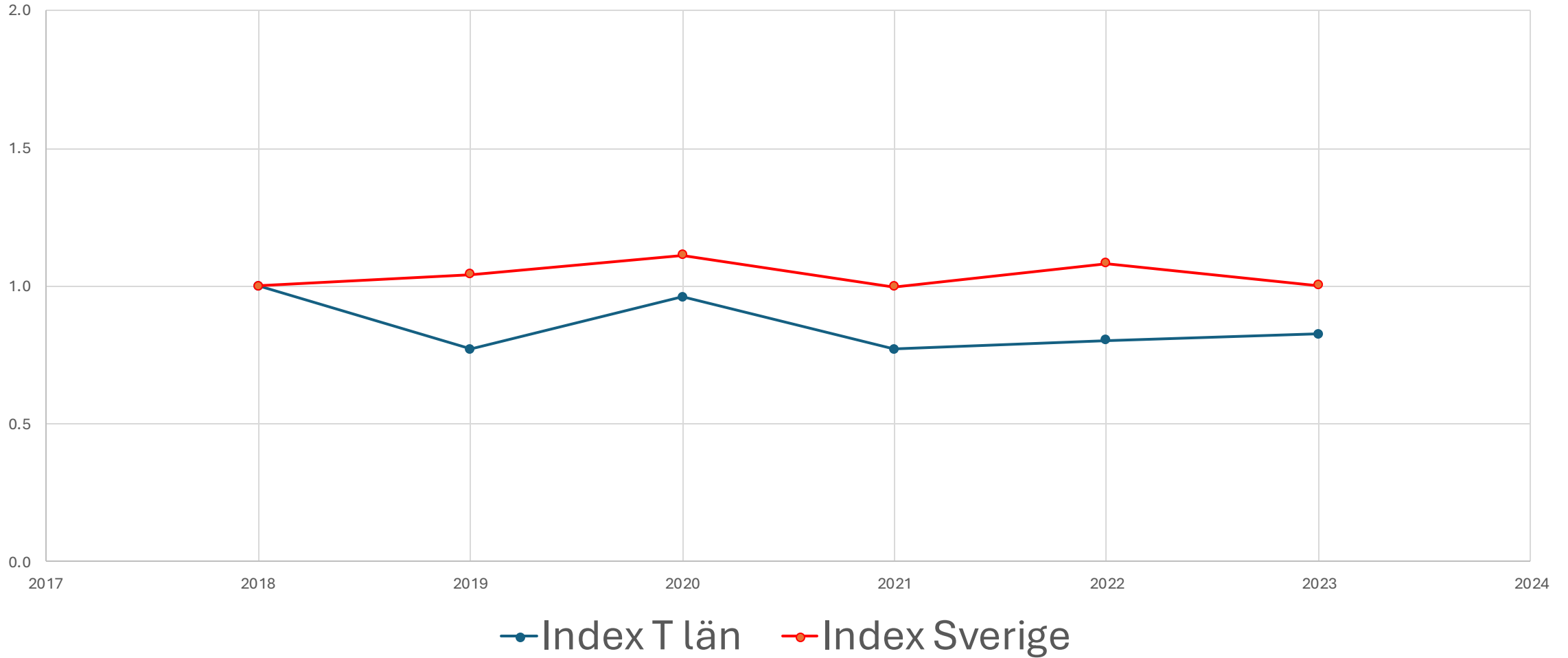


Atlas 2



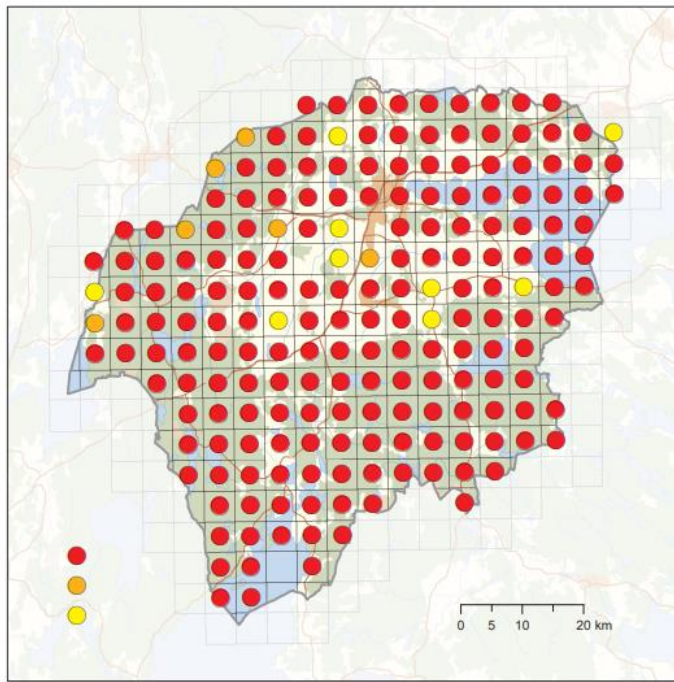


# Gräsand

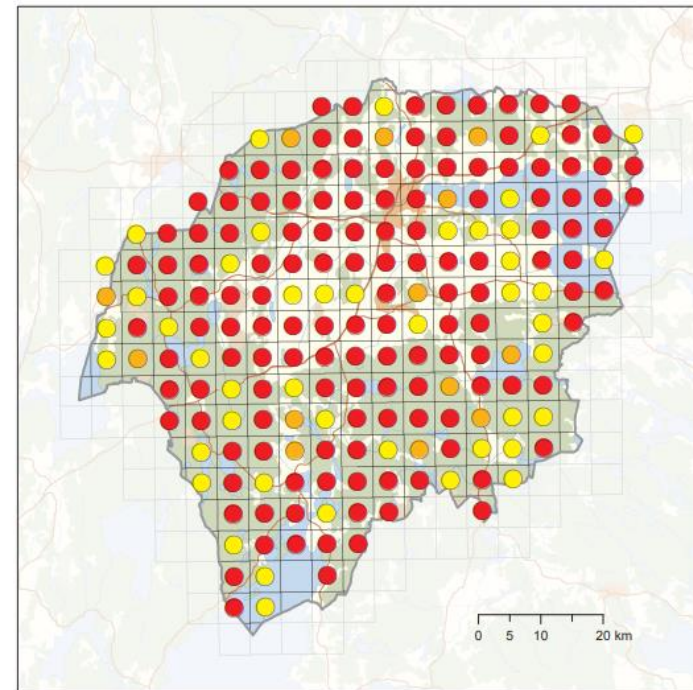


# Gräsand

Atlas 1



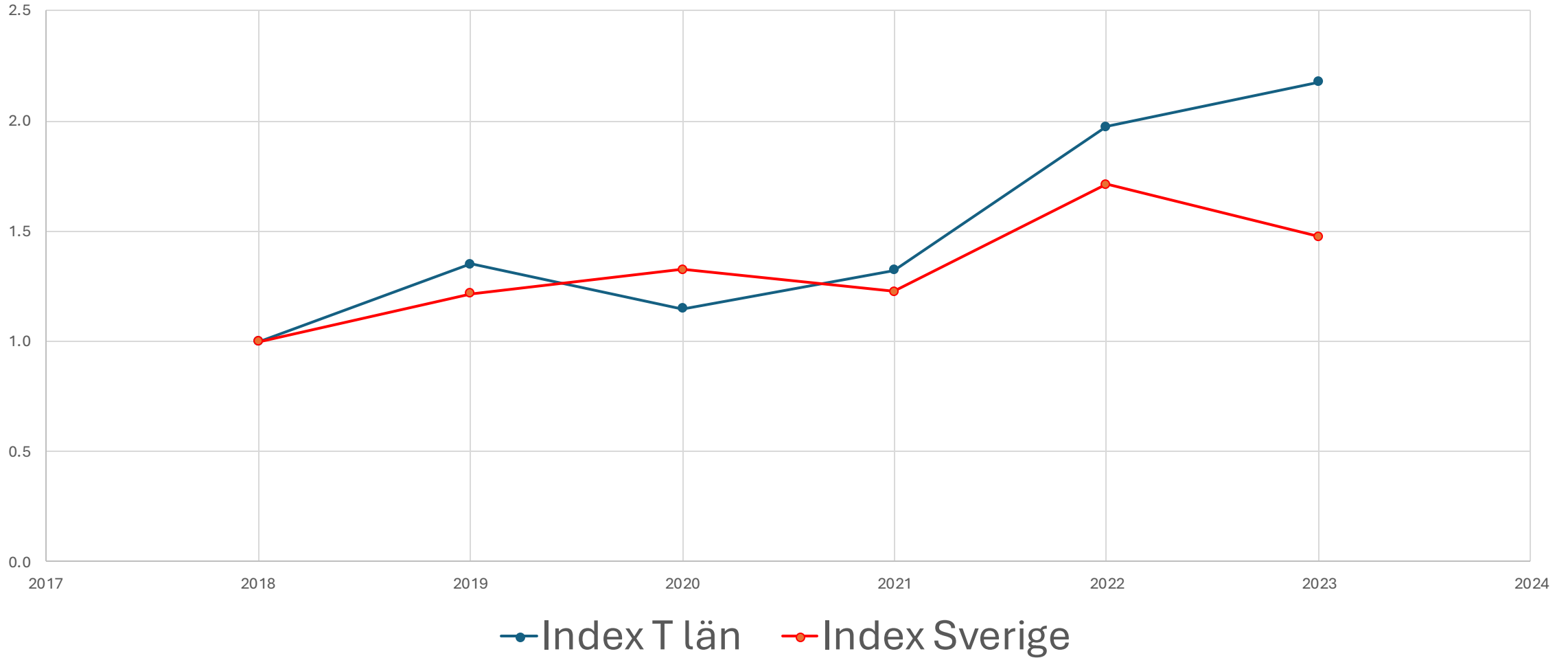
Atlas 2





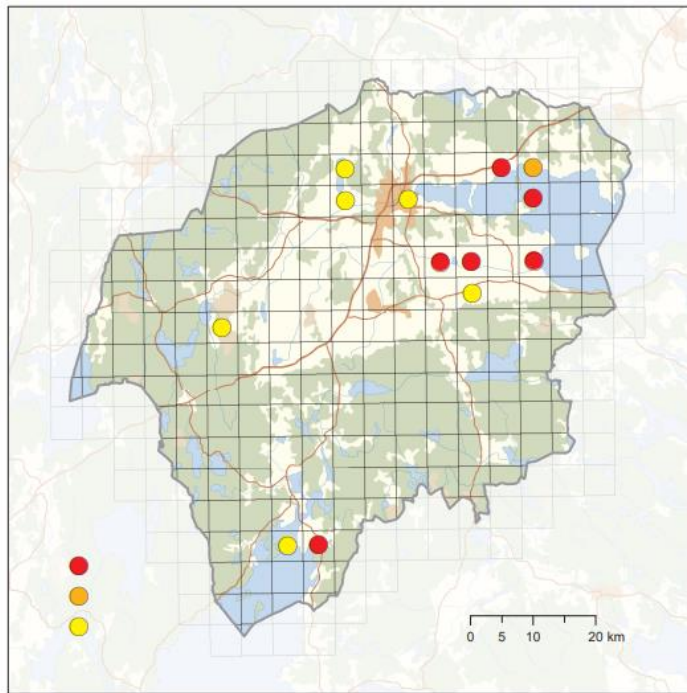


# Snatterand

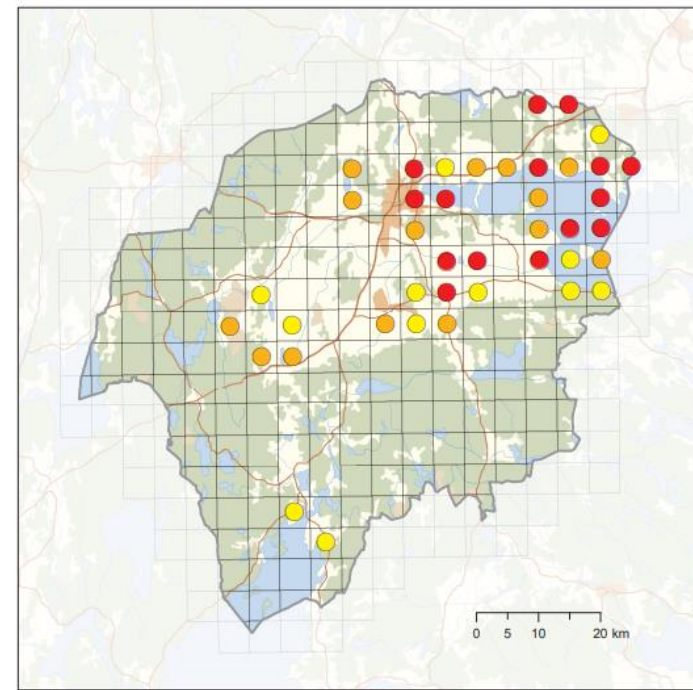


# Snatterand

Atlas 1

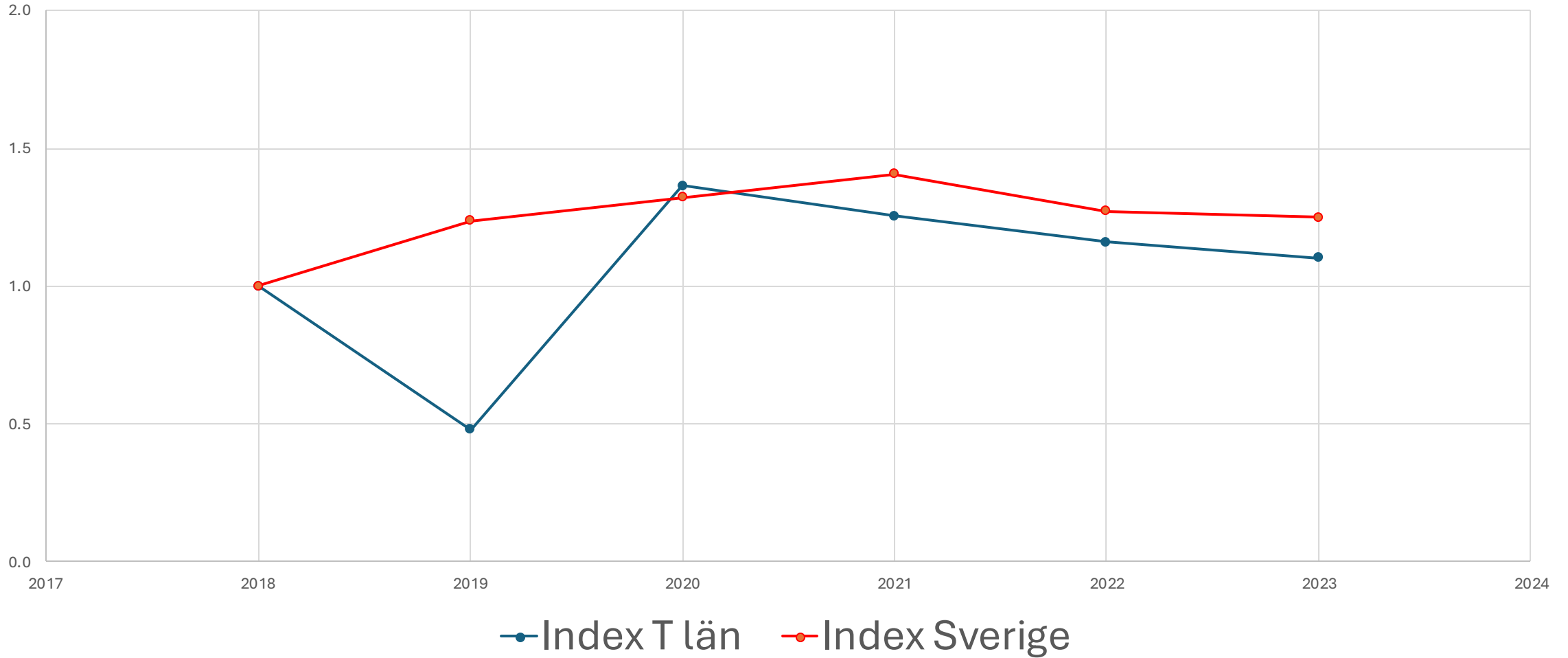


Atlas 2



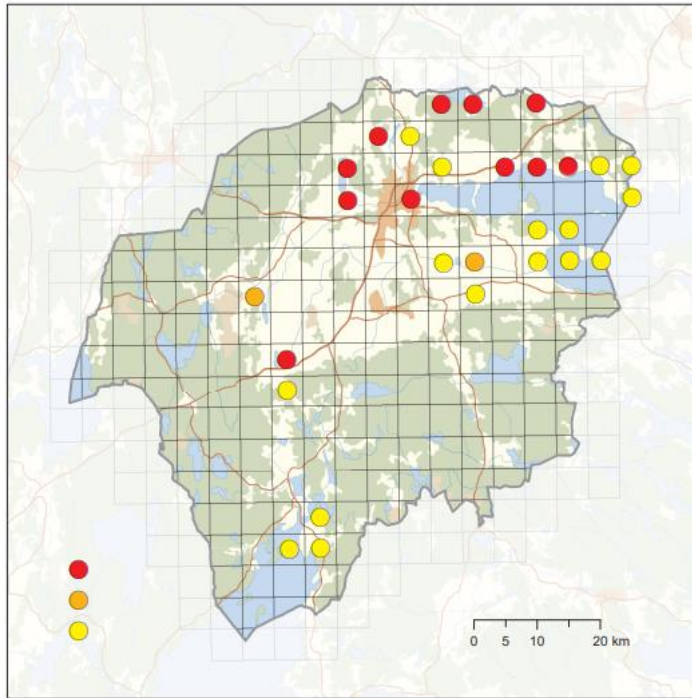


# Skedand

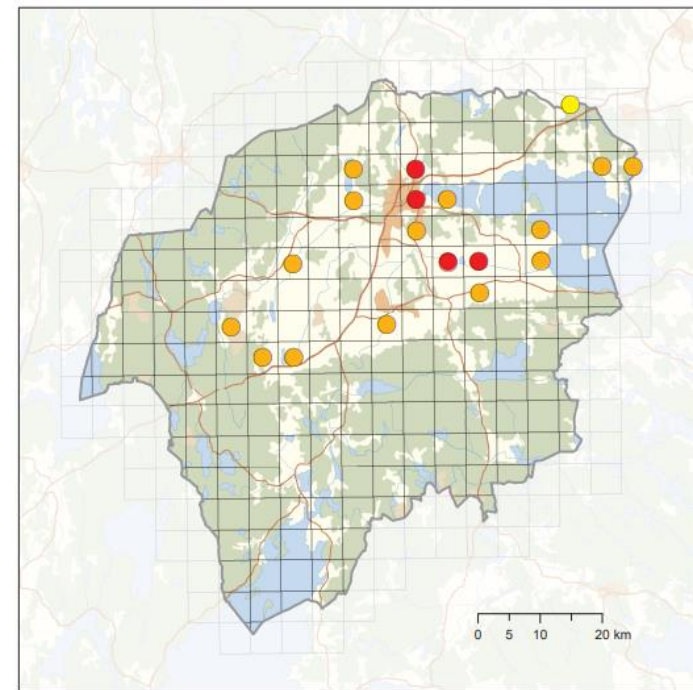


# Skedand

Atlas 1

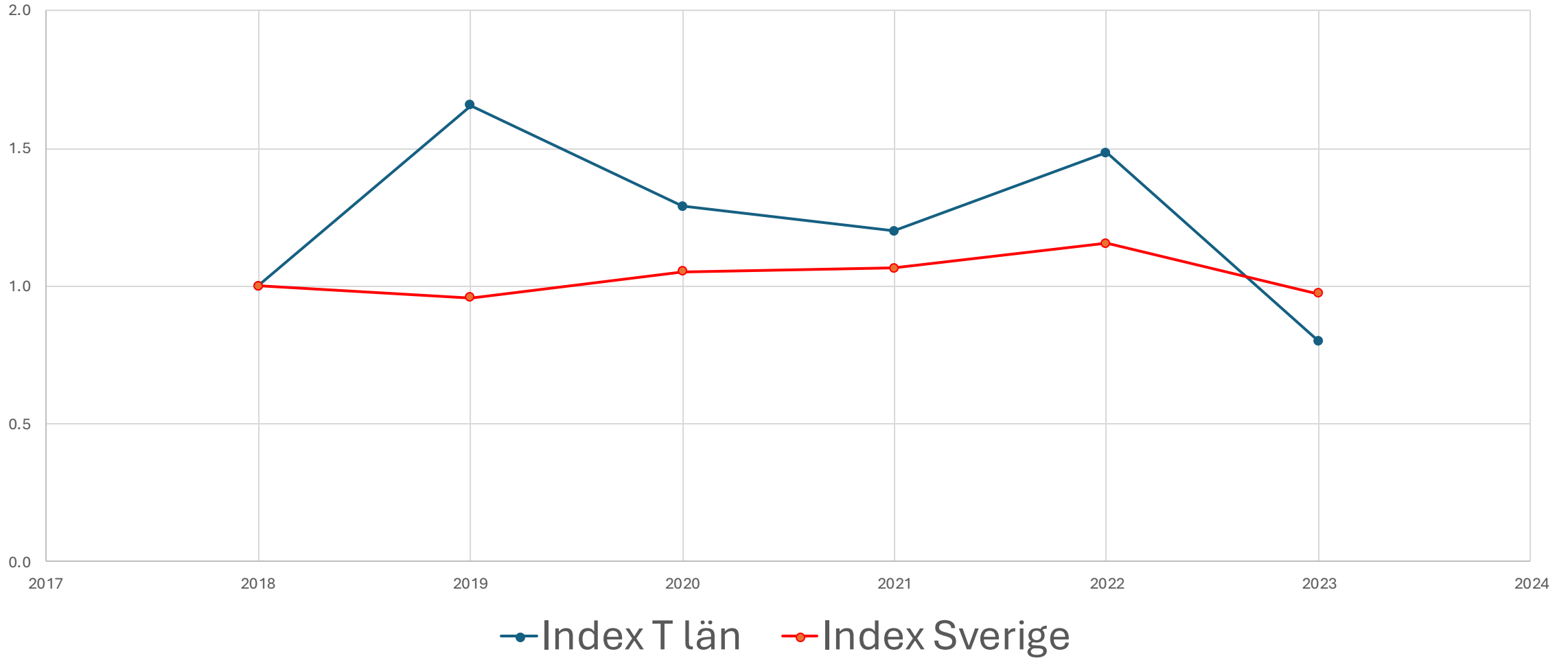


Atlas 2





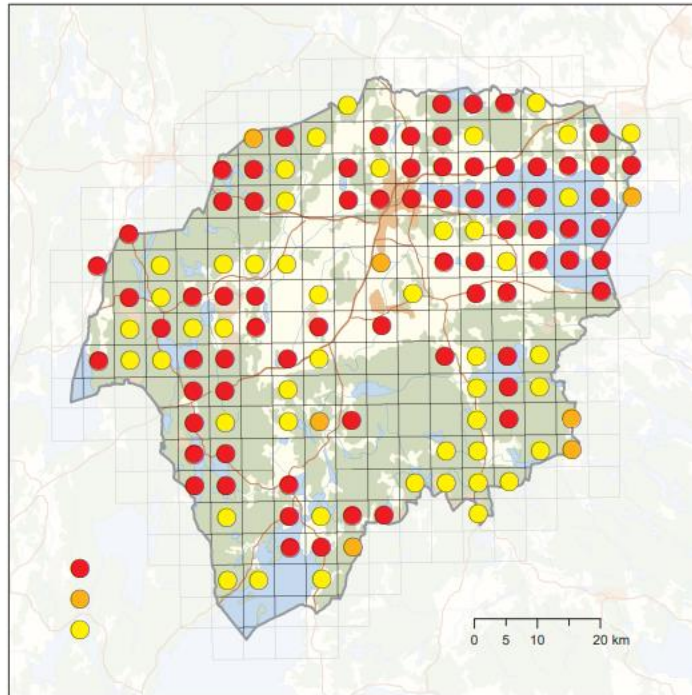
# Kricka



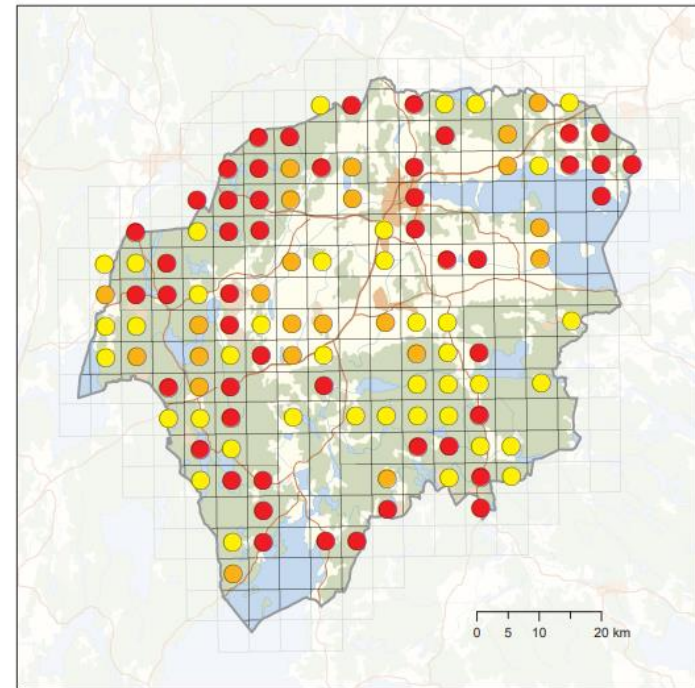


# Kricka

Atlas 1

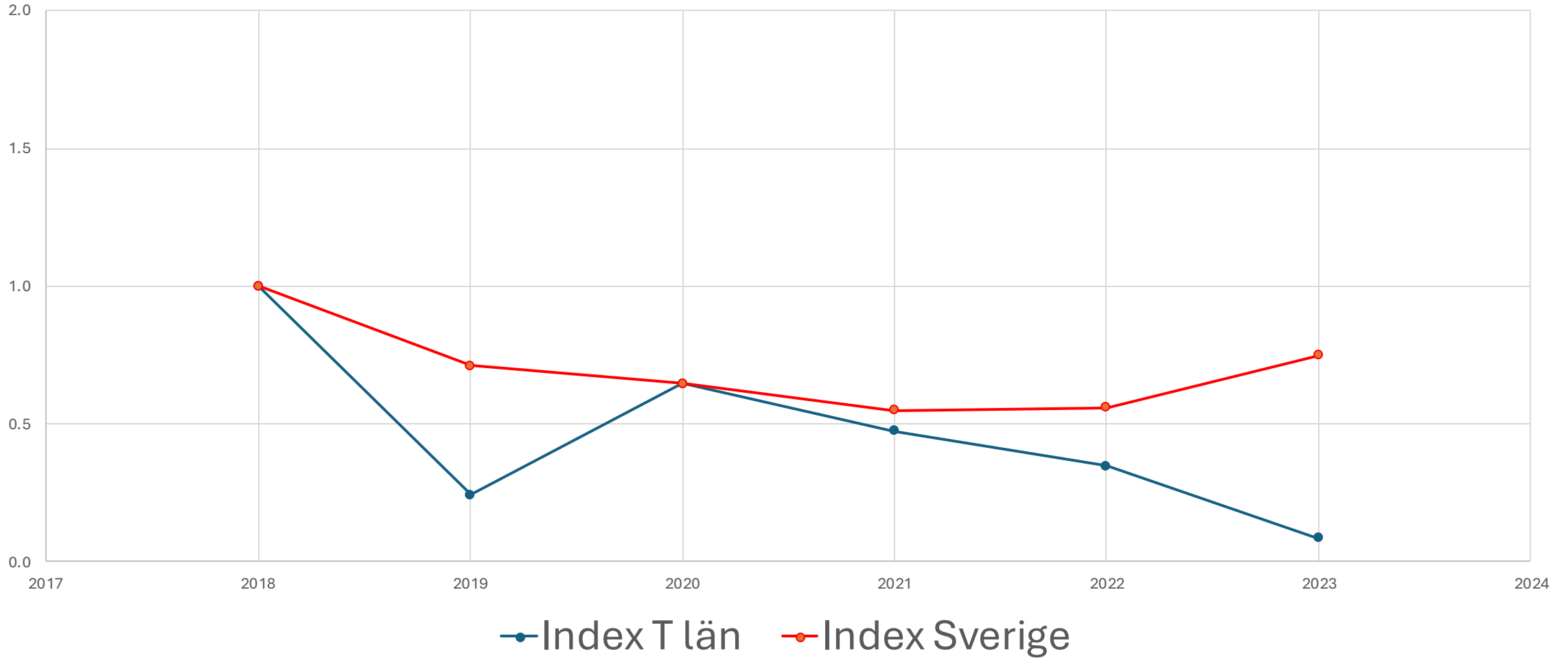


Atlas 2



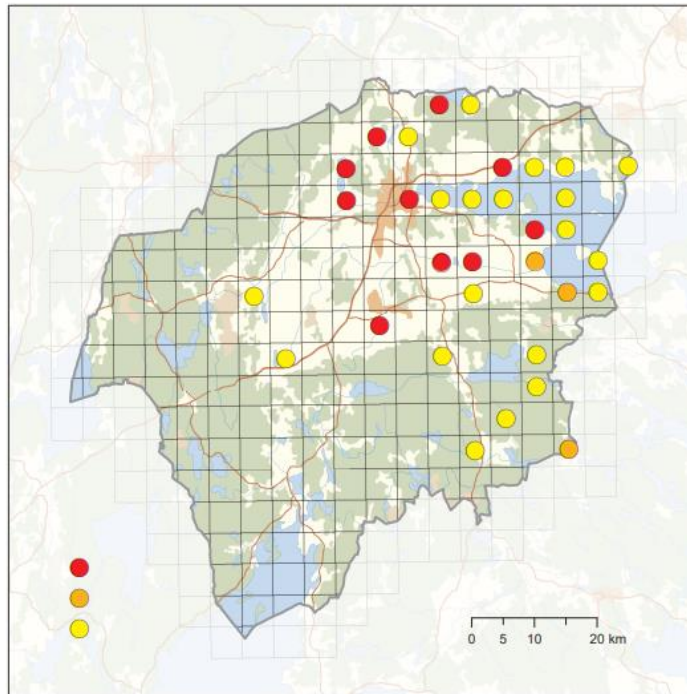


# Årta

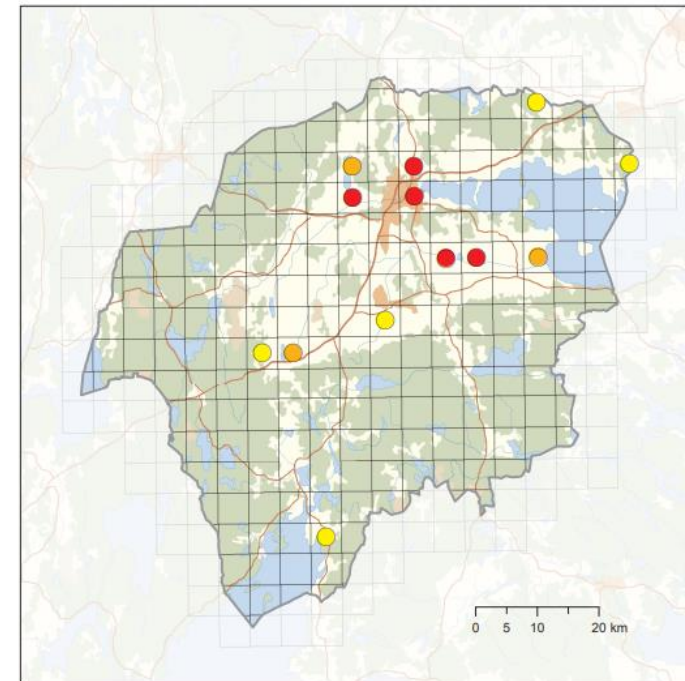


# Årta

Atlas 1

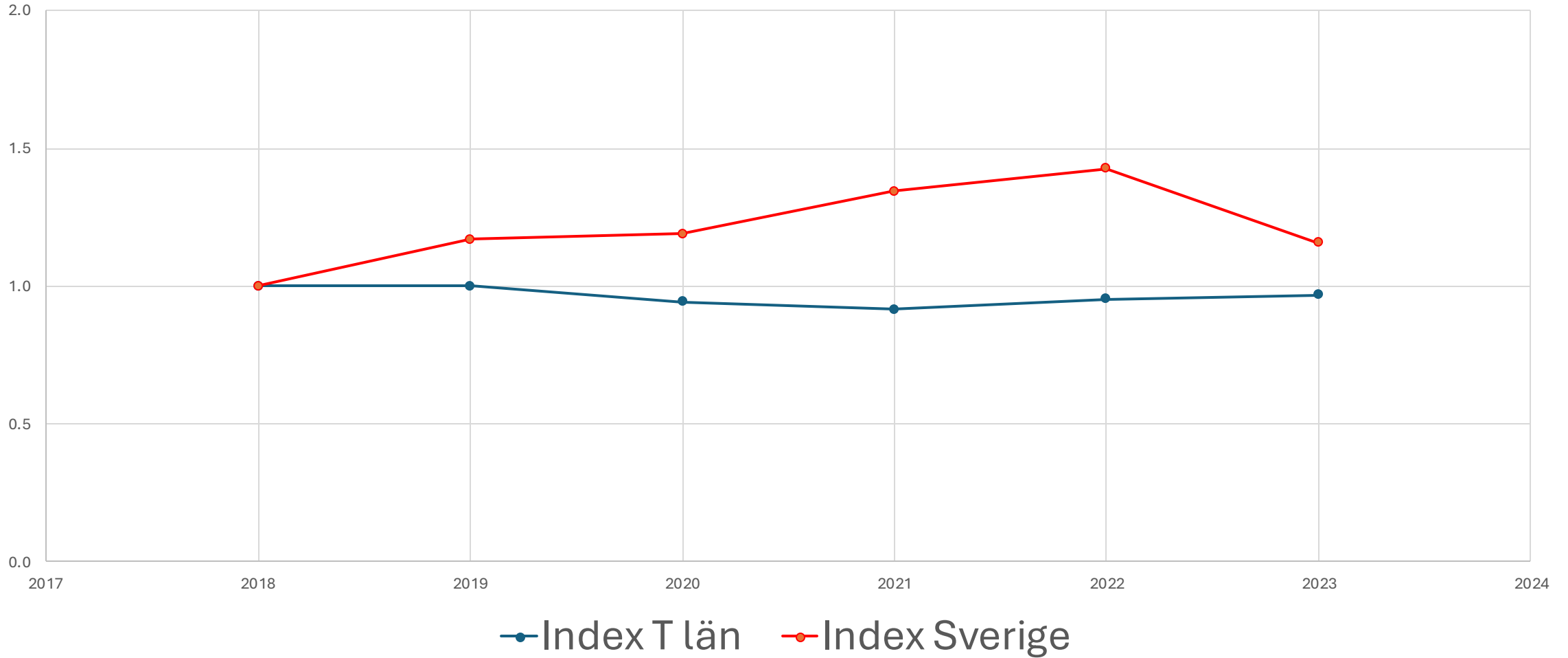


Atlas 2



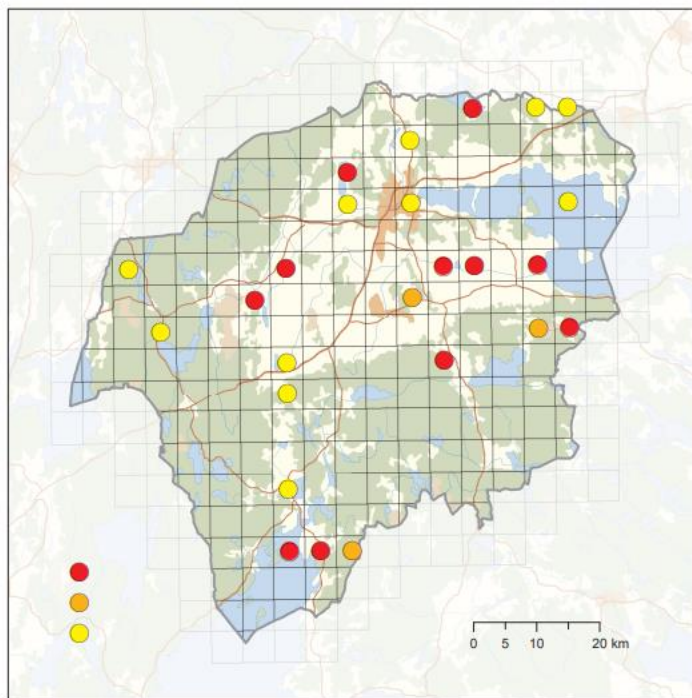


# Svarthakedopping

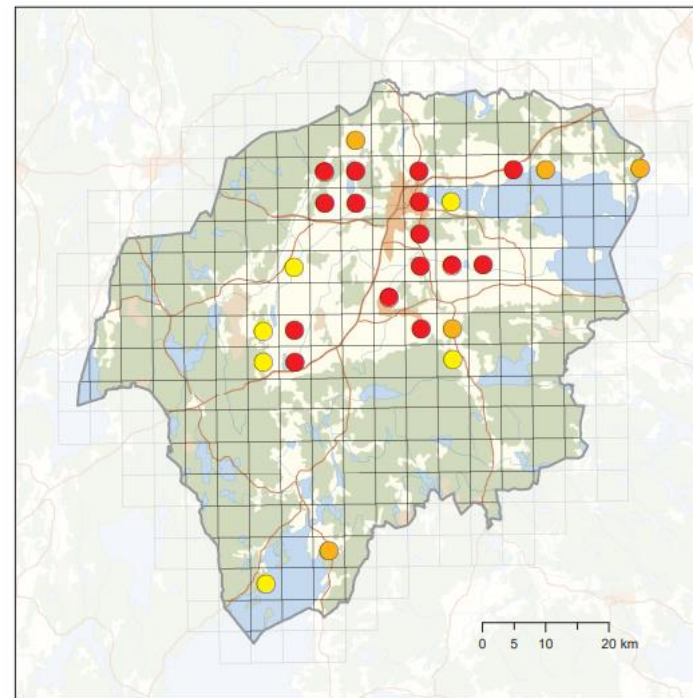


# Svarthakedopping

Atlas 1



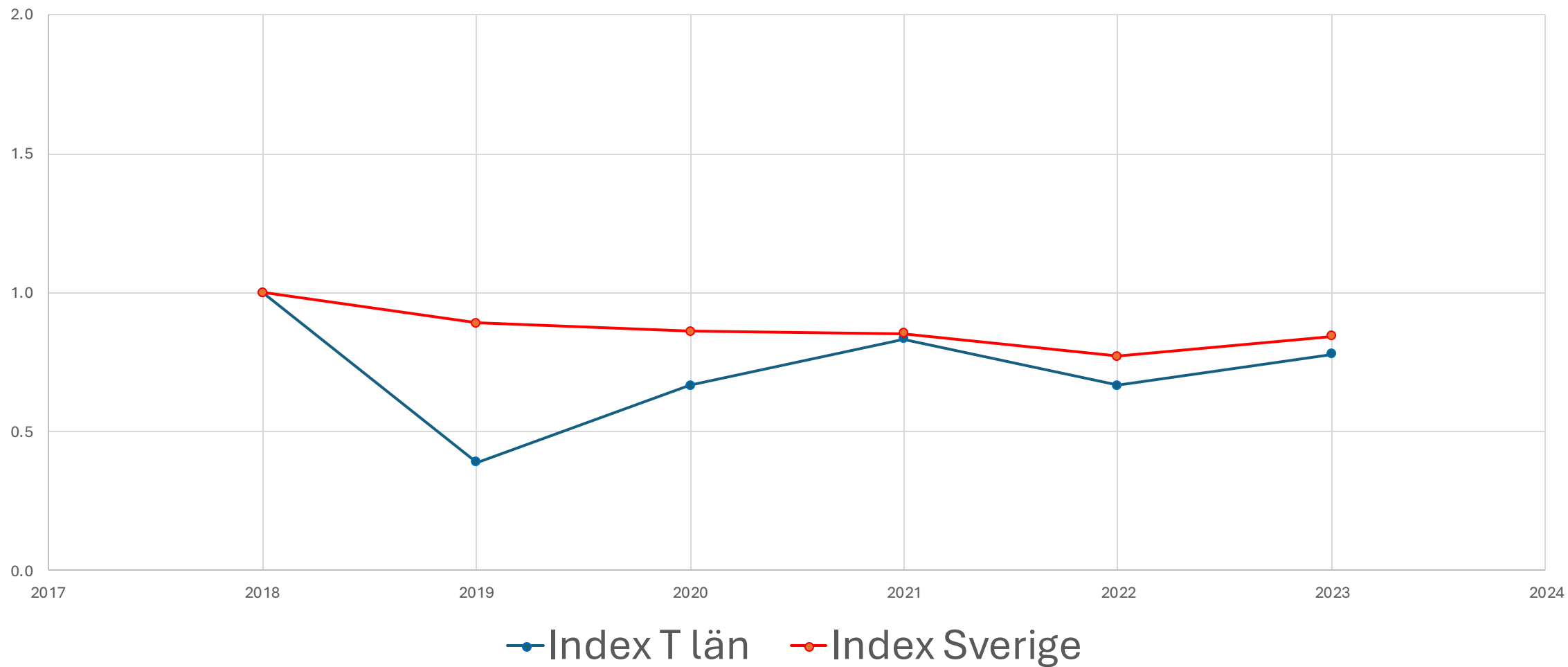
Atlas 2





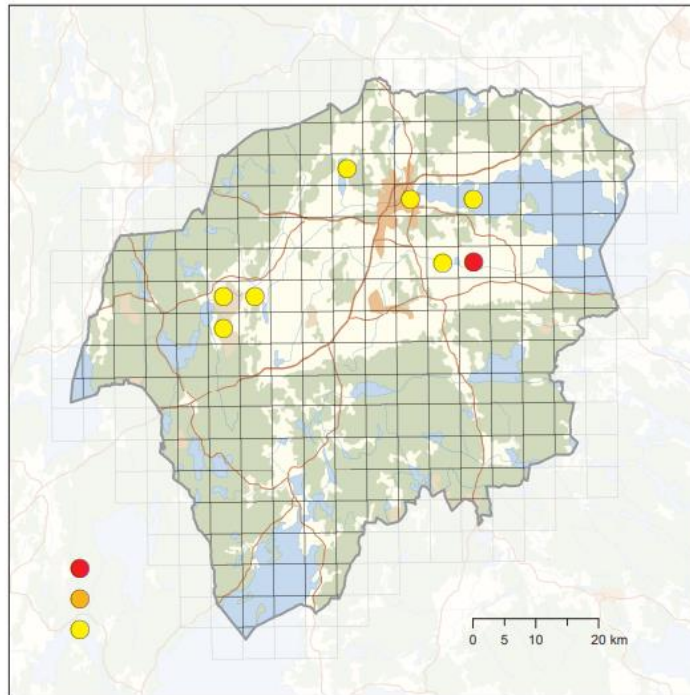


# Gråhakedopping

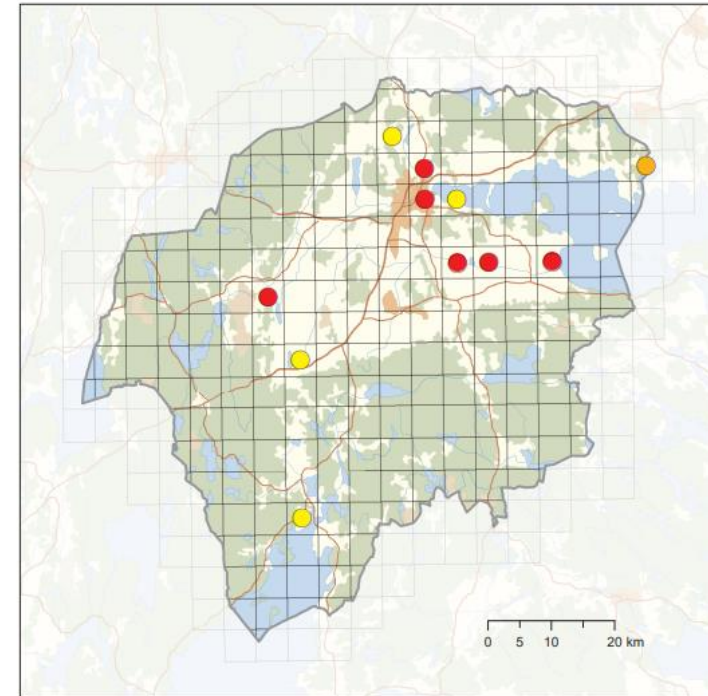


# Gråhakedopping

Atlas 1

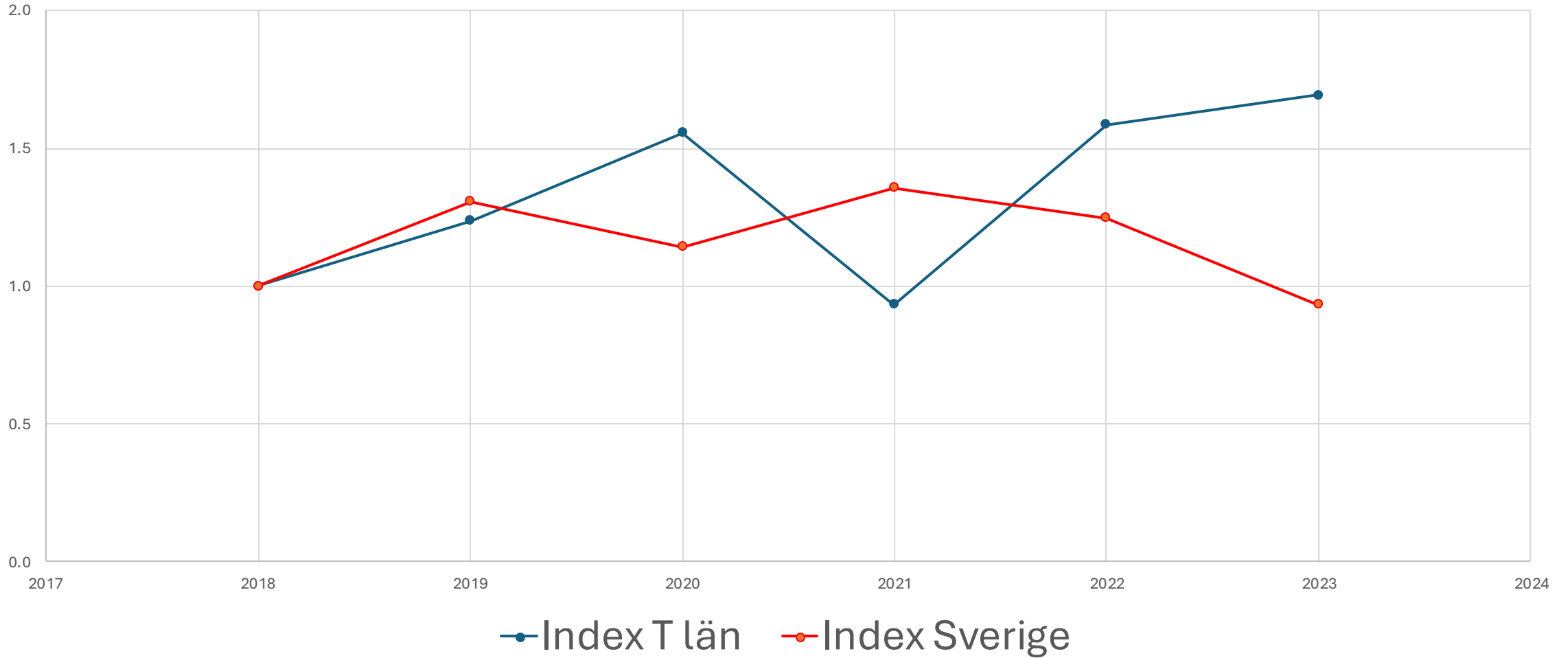


Atlas 2



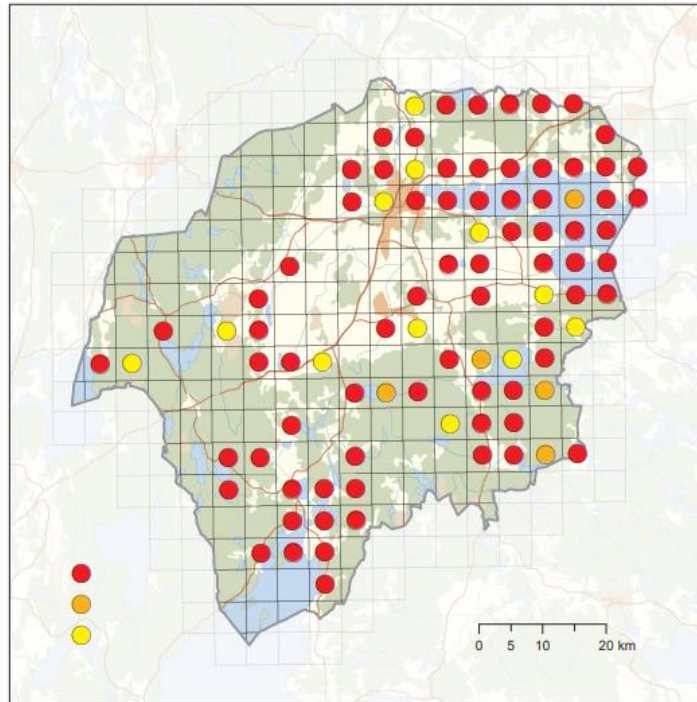


# Sothöna

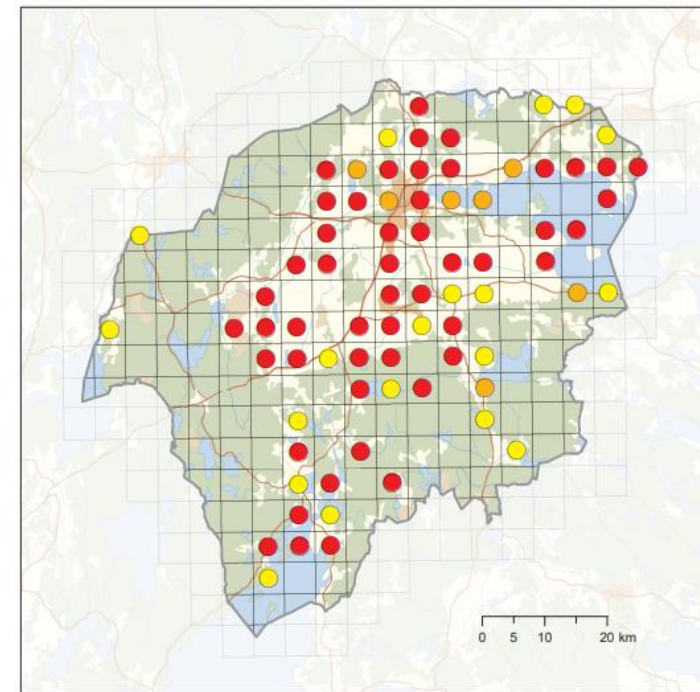


# Sothöna

Atlas 1

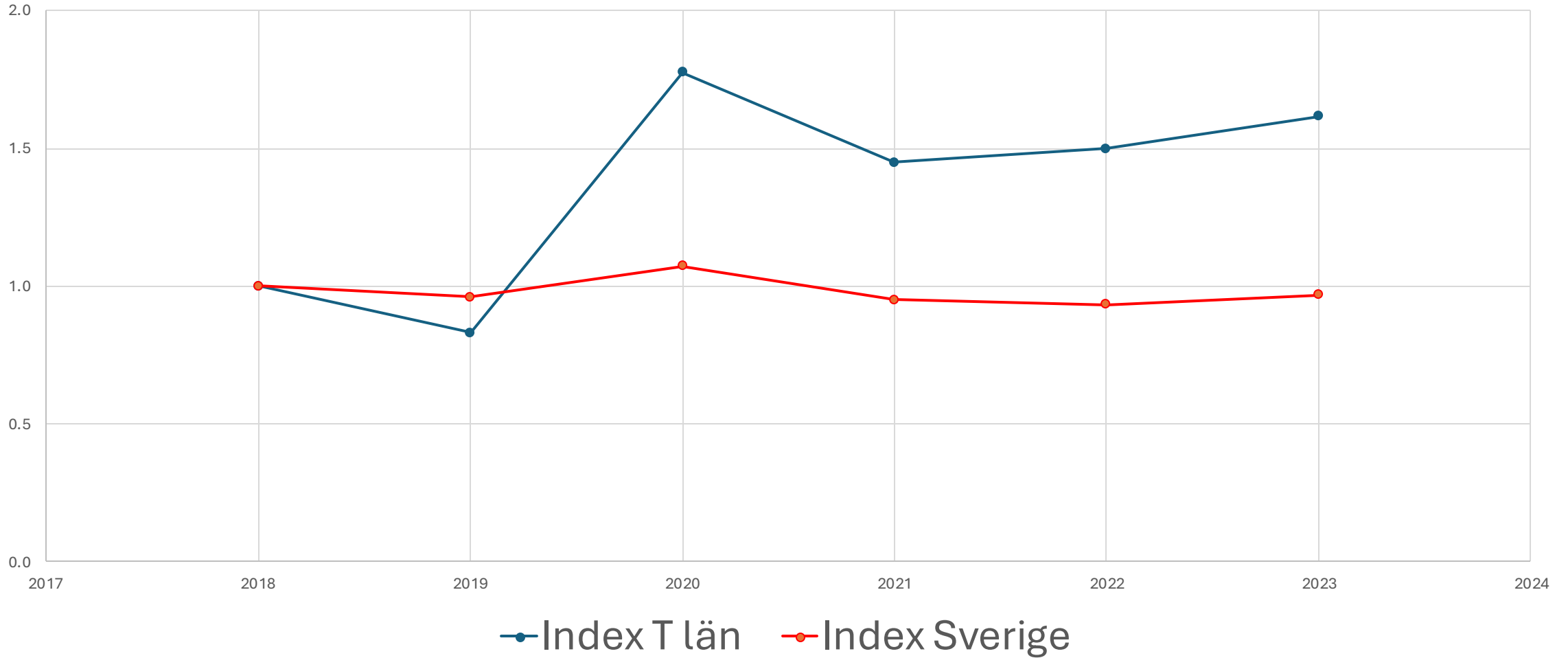


Atlas 2



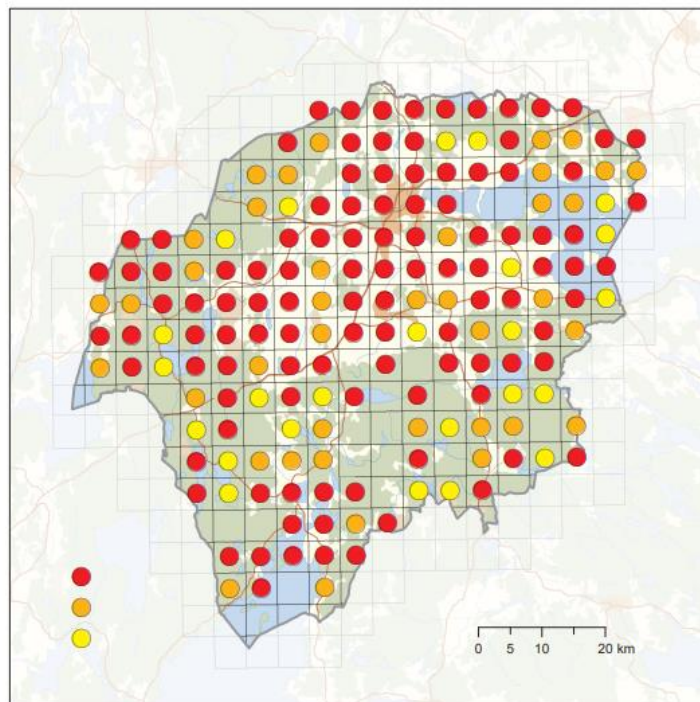


# Tofsvipa

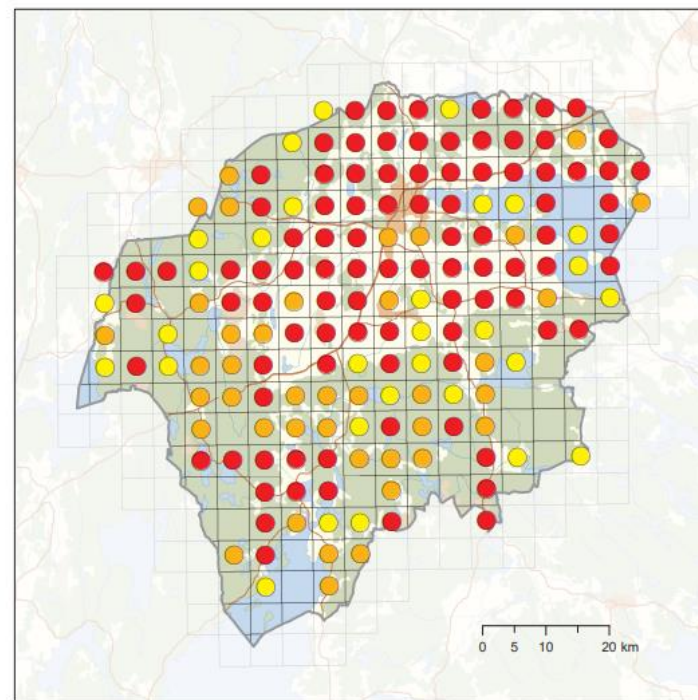


# Tofsvipa

Atlas 1



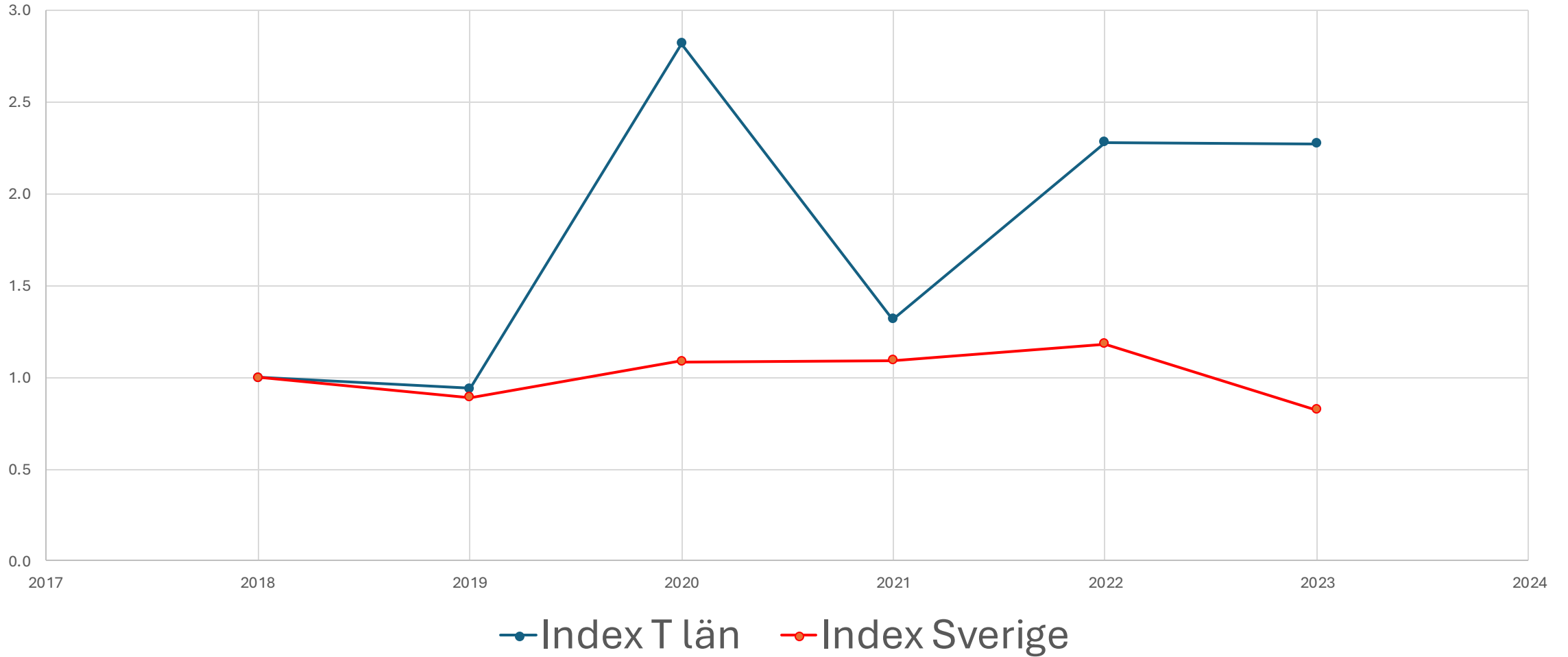
Atlas 2





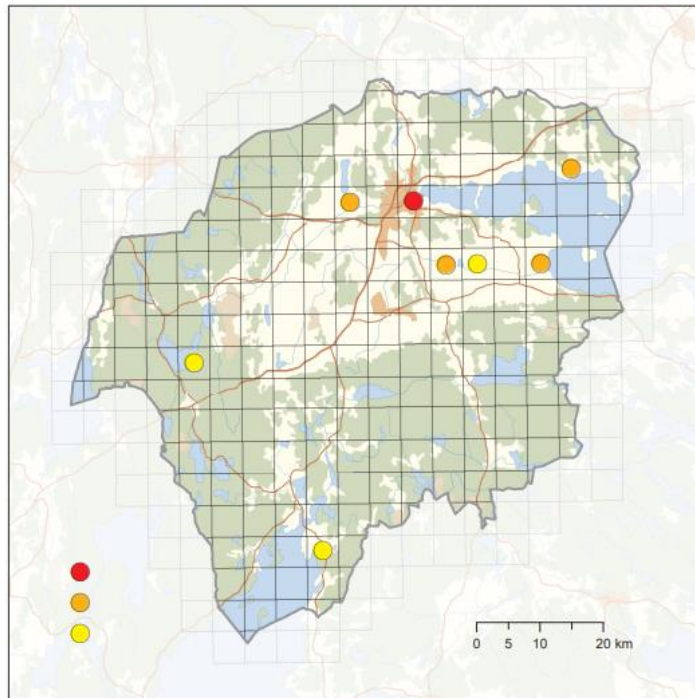


# Rödbena

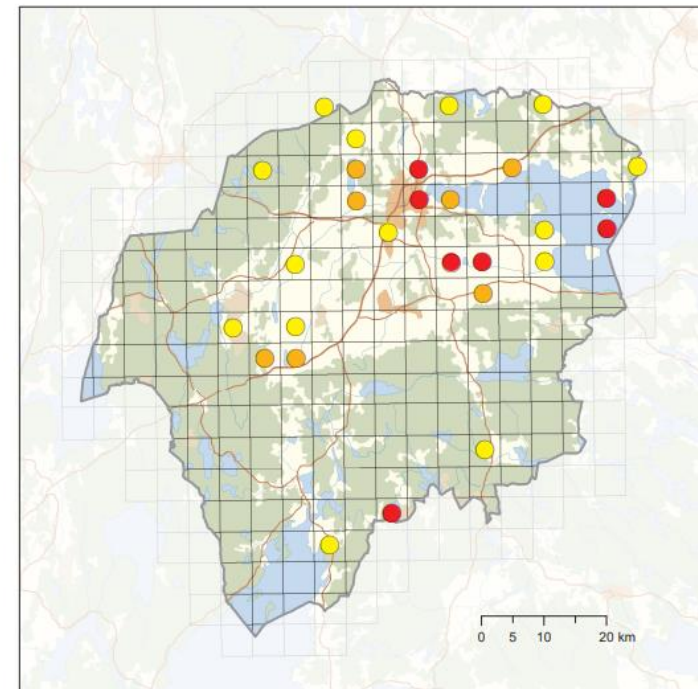


# Rödbena

Atlas 1

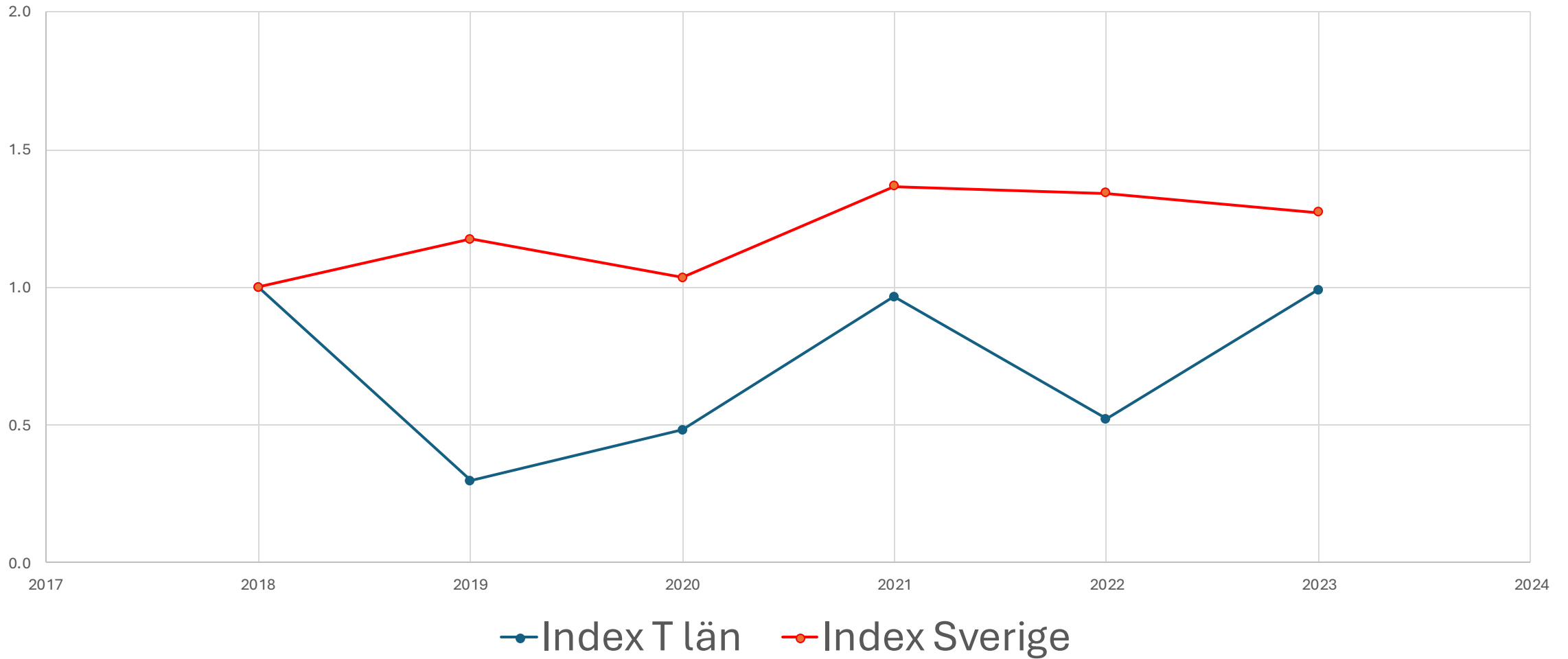


Atlas 2



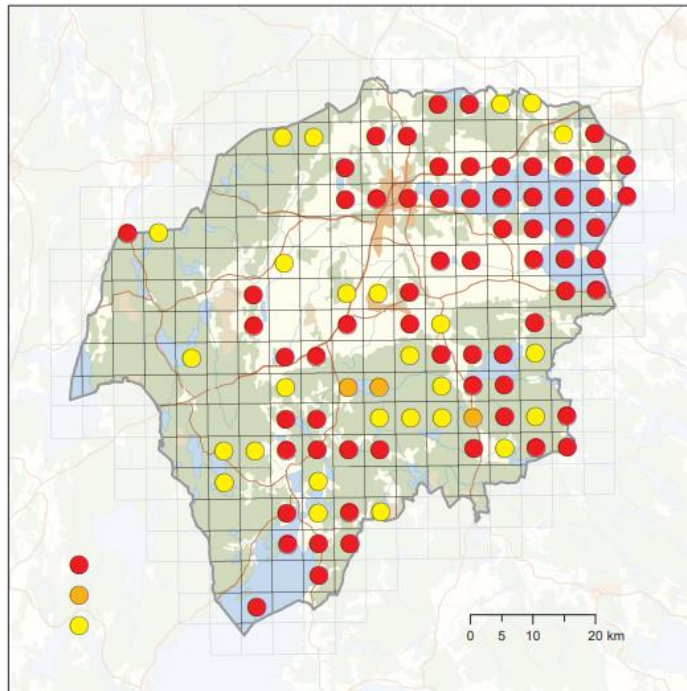


# Skrattmås

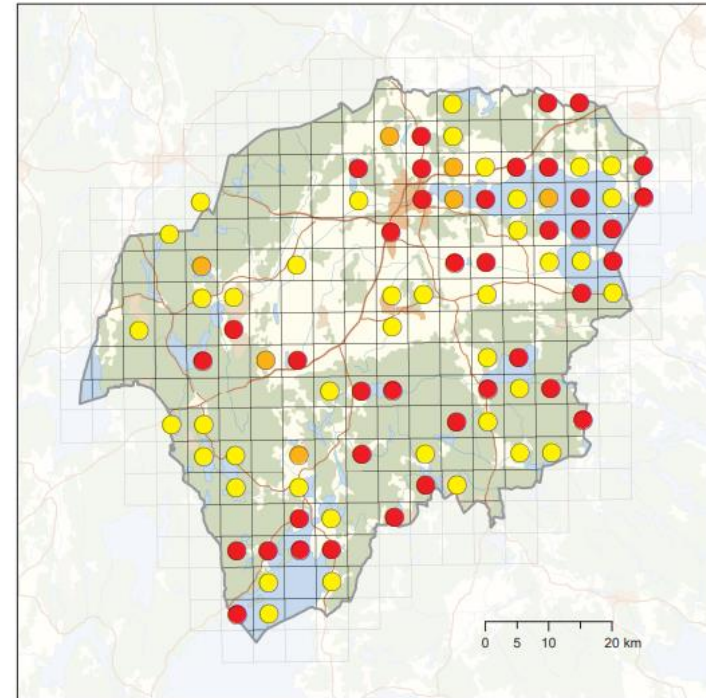


# Skrattmåå

Atlas 1

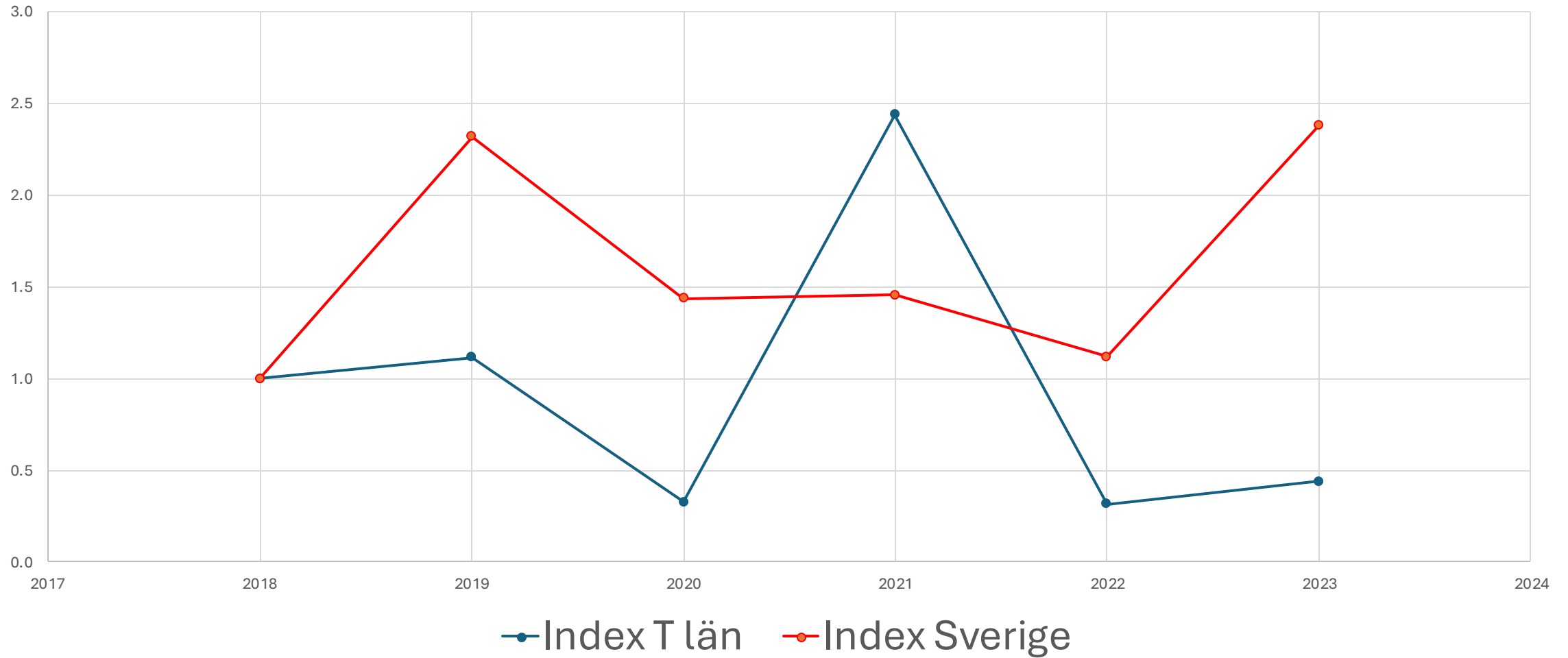


Atlas 2





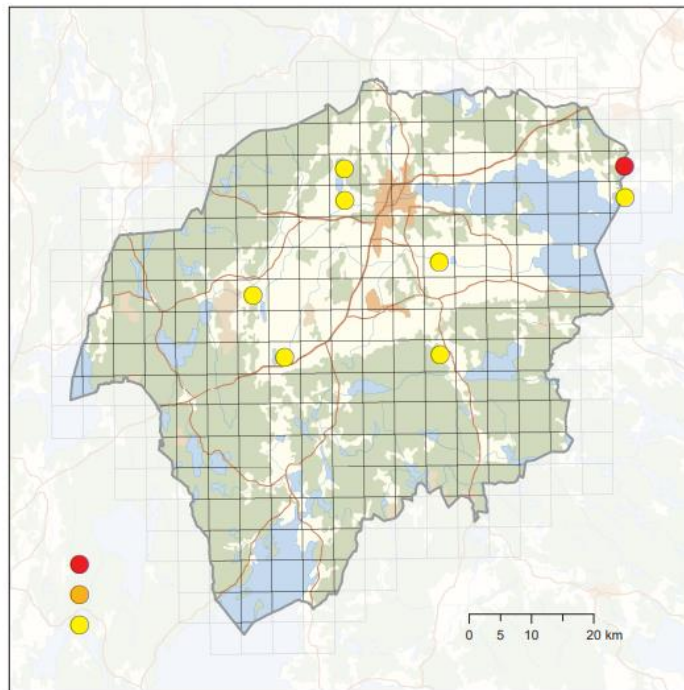
# Dvärgmås



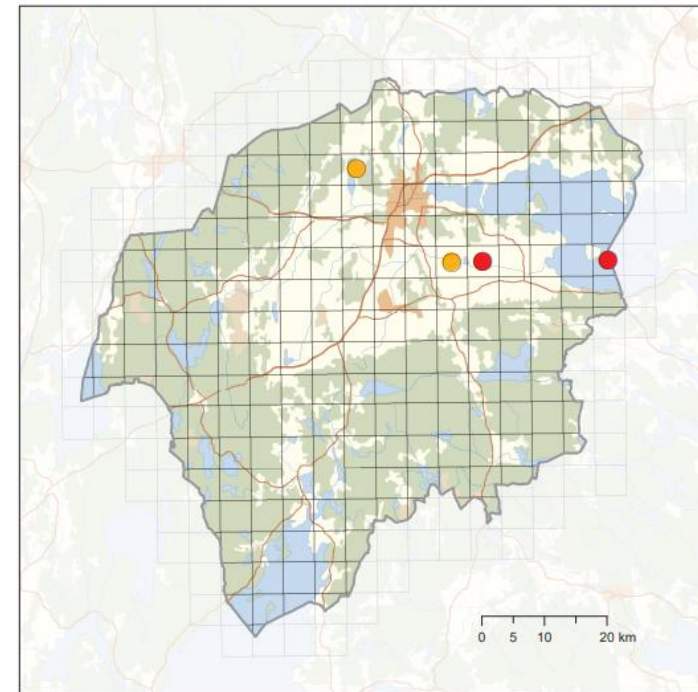


# Dvärgmås

Atlas 1

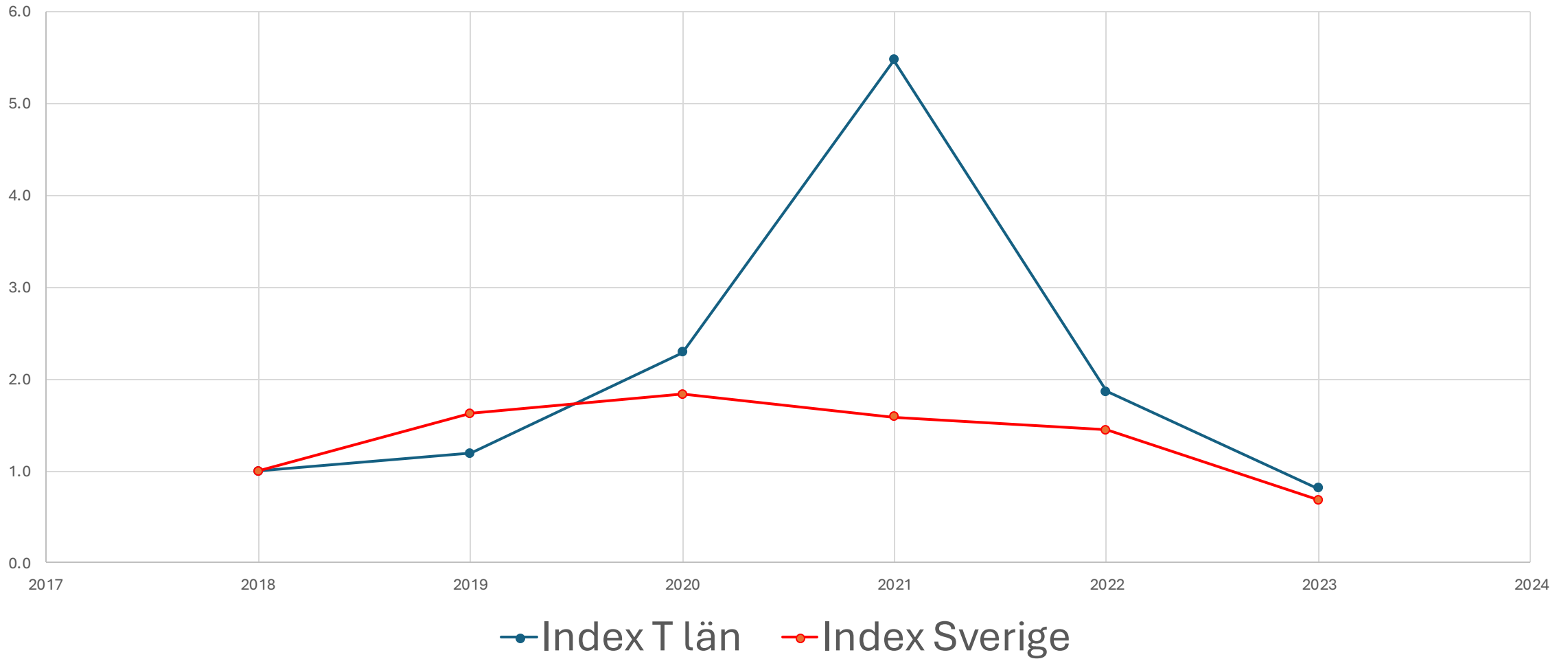


Atlas 2



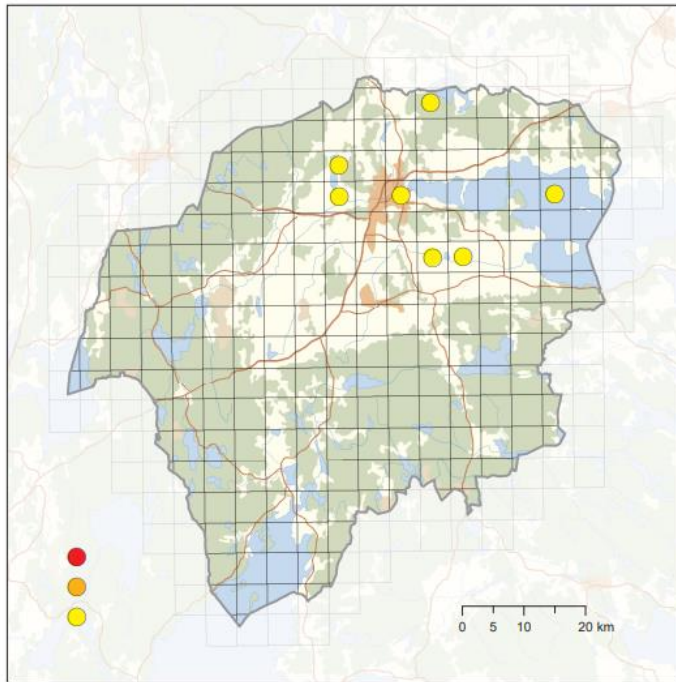


# Svarttärna

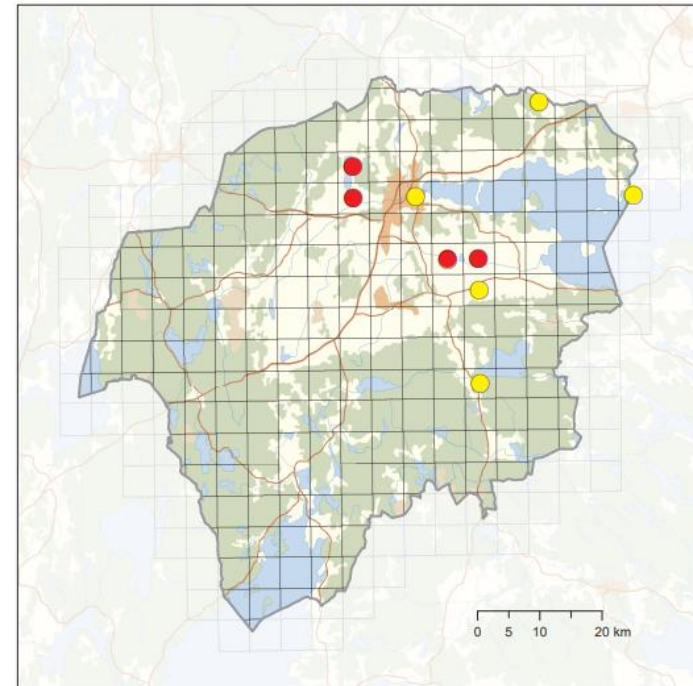


# Svarttärna

Atlas 1

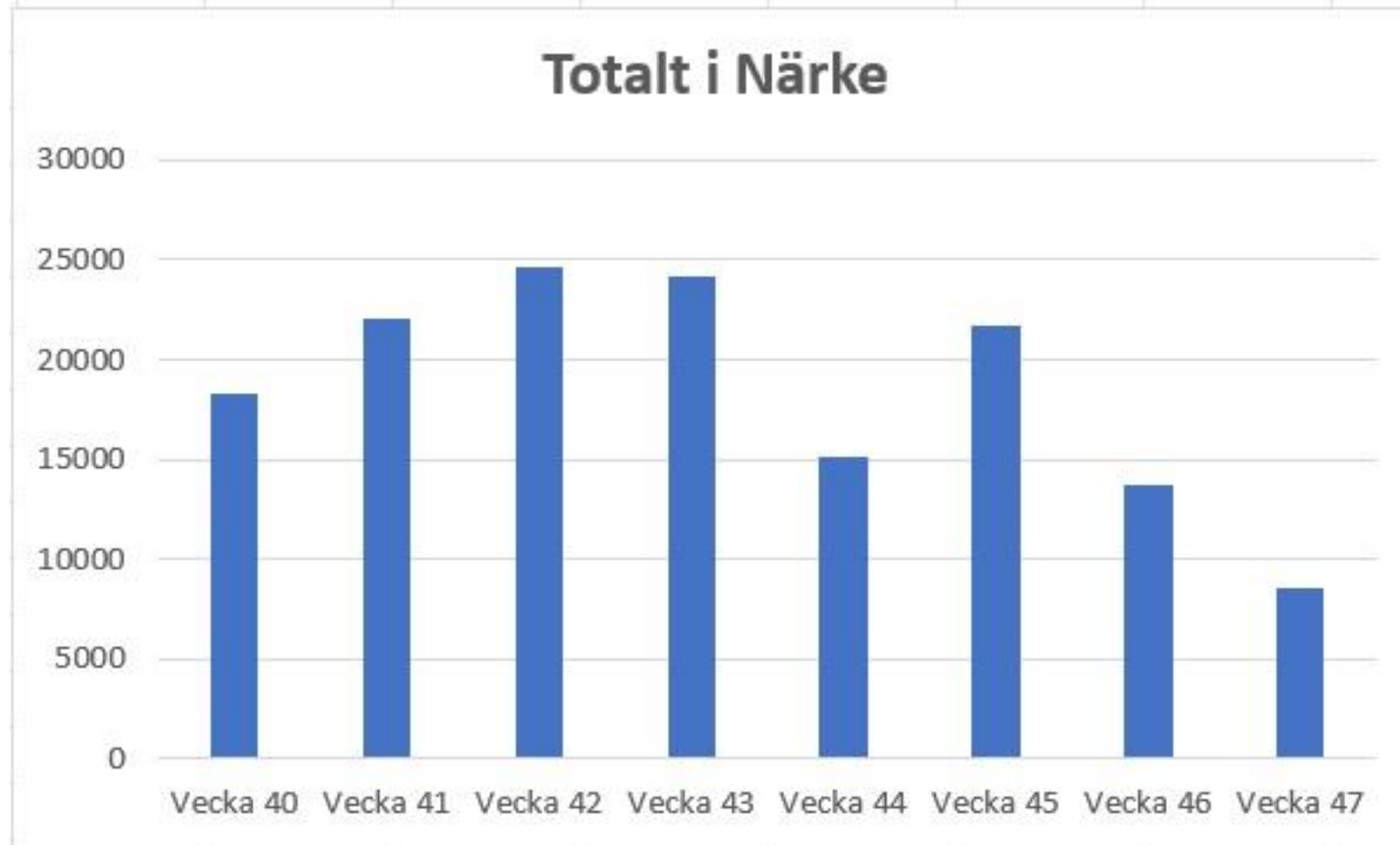


Atlas 2

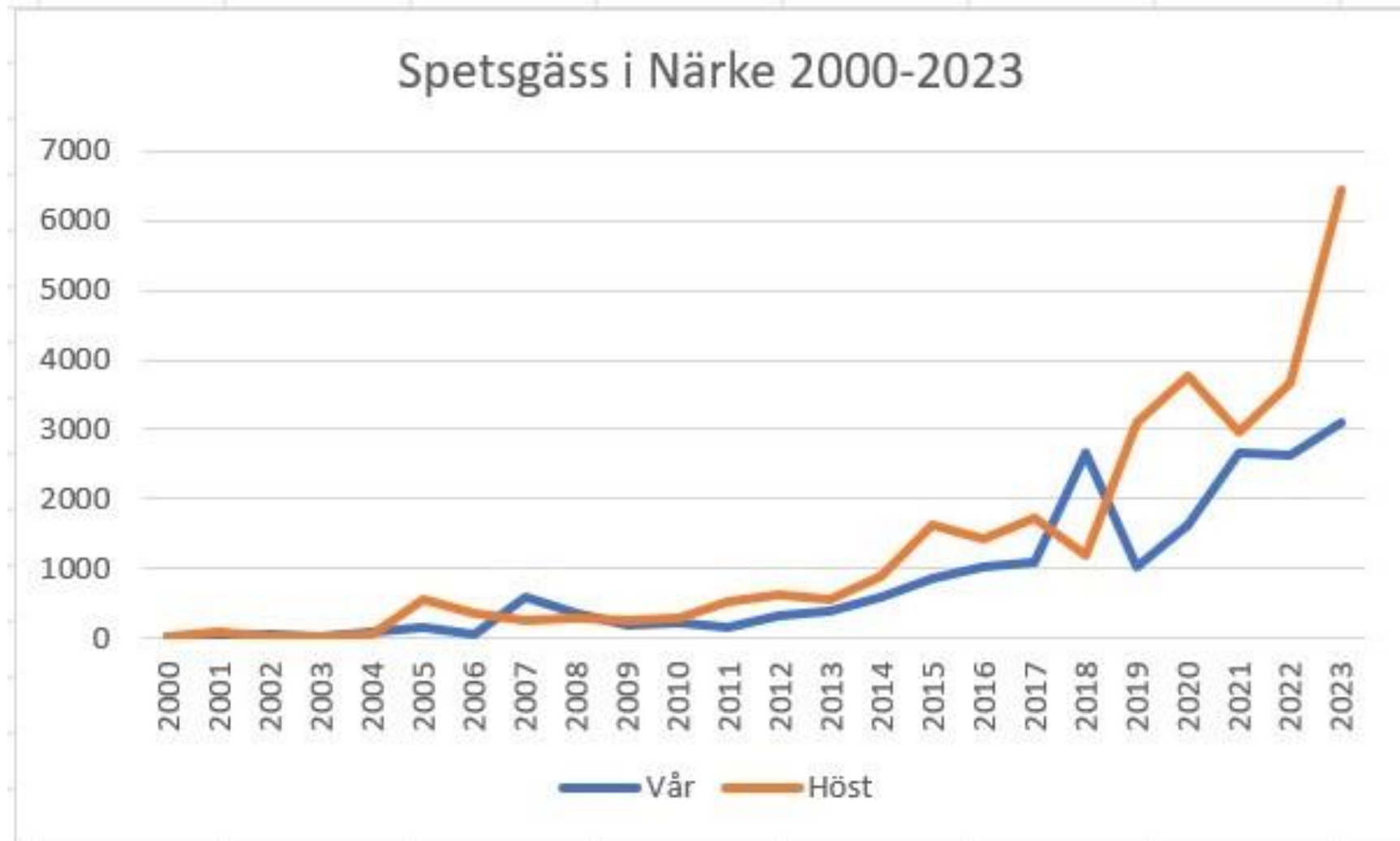




# Rastande gäss under hösten 2023



# Spetsbergsgäss i Närke



# Hur går det då för våra våtmarksfåglar?

- Både bra och dåligt!
- Gynnas av naturvårdsåtgärder som utförs.
- Missgynnas av vad?
- Vad ska vi arbeta vidare med?





# Tack för mig!

